



Searching beyond imagination

IntelliVIX



Loitering



Path Passing



Directional Moving



Removal



Smoke



Flame



Vehicle Collision



Car Stopping



Parking



Dwell Time



Abandoned



Stopping



People Collapsing



Grouping



Violence



Traffic Congestion



Water Level



Face detect & Recognition

“IntelliVIX” Real time alarm / Auto PTZ tracking / Real Time Object Recognition
Deep learning / Face Recognition system










IntelliVIX

IntelliVIX is an all in one innovative intelligent video surveillance system that upgrades basic video surveillance system to superb intelligent system and alert system. It offers high-performance real-time video analytics in various environment and low false alarm rates with accurate real time video analytics technologies.

IntelliVIX includes the most advanced video analytics technology as well as rich and amazing functions such as real time events detection & immediate notification, video/event/object recording, rapid search and automatic PTZ tracking technologies.



| Smart City

- 01  Abnormal sound detection system
- 02  Intelligent CCTV System
- 03  License plate recognition
- 04  Illegal parking monitoring system
- 05  Smoke / flame surveillance system
- 06  Loitering / Dumping (Abandoned) detection
- 07  Traffic flow monitoring system
- 08  Highway and Tunnel Traffic Monitoring system
- 09  Violence detection

| Critical Infra

- 10  Loitering detection
- 11  Detection of Abnormal Situations
- 12  Facility management system
- 13  Cultural Property management

IntelliVIX® FAMILY

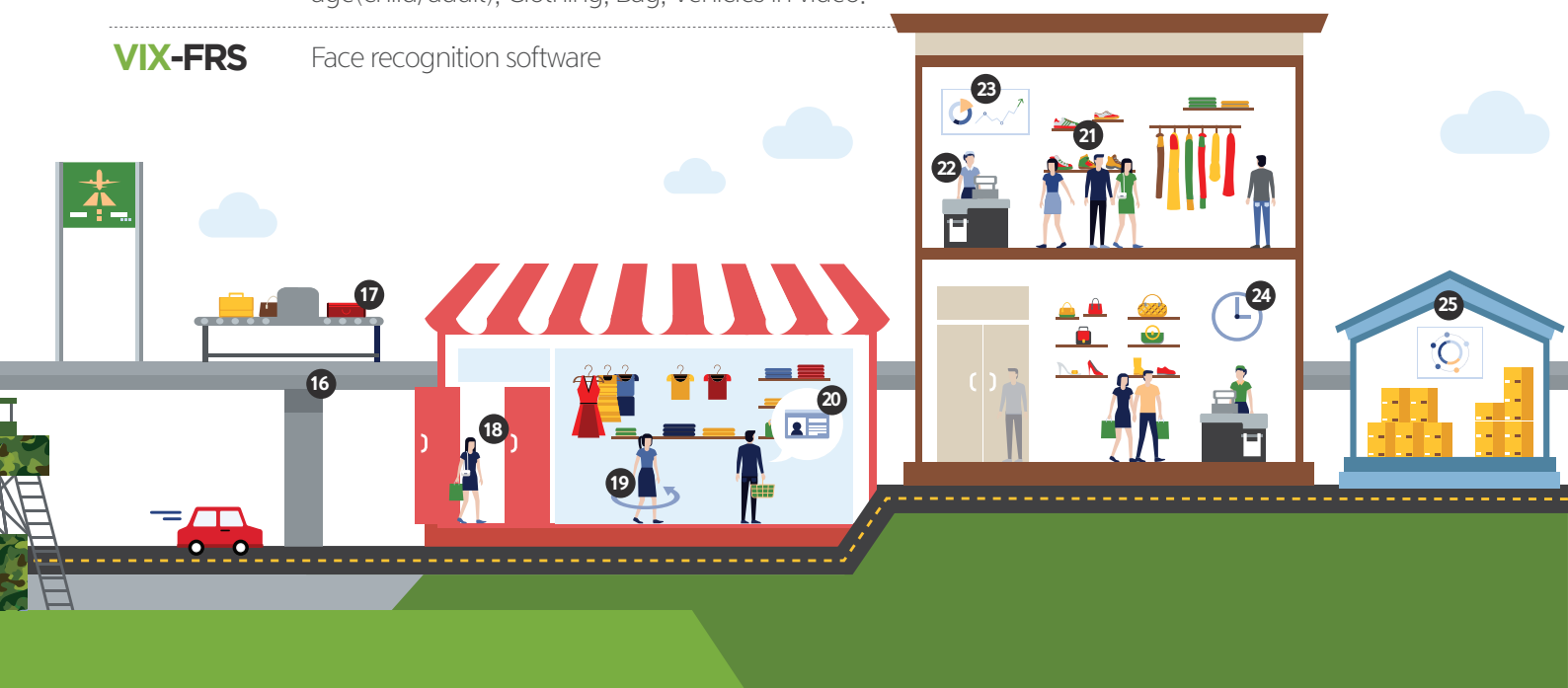
VIX-100B Video Surveillance monitoring software which detects moving object(Person, Vehicle etc) automatically and track continuously. Rule-set Based Event Detection.

VIX-120B Video Surveillance monitoring software which detects moving object(Person, Vehicle etc) automatically and track continuously. Rule-set Based Event Detection. Provide real time object attribute such as human, age(child/adult), Clothing, Bag, Vehicles in video.

VIX-200B Deep learning based facial recognition software which detects face with using video surveillance camera and provide the information such as age estimation, gender classification, facial expression recognition

VIX-220B Deep learning based facial detection software which detects face with using video surveillance camera and provide the information such as age estimation, gender classification, facial expression recognition. Provide real time object attribute such as human, age(child/adult), Clothing, Bag, Vehicles in video.

VIX-FRS Face recognition software



| Retail

- | | | | |
|----|--|----|--|
| 14 |  Intrusion detection system | 22 |  Manpower placement |
| 15 |  Coastal Surveillance | 23 |  Customer Data Collection |
| 16 |  Bridge monitoring system | 24 |  Quick response |
| 17 |  Detection of Unknown material | 25 |  Recognition / classification |
| 18 |  Counting the number of customers | | |
| 19 |  Movement pattern analysis | | |
| 20 |  Customer profiling | | |
| 21 |  Population density detection | | |



IntelliVIX
Searching beyond imagination

IntelliVIX Co., Ltd. (Corporate Headquarters)
6F, Prince Hyoryung Building, 4, Hyoryungro 34-gil,
Seocho-gu, Seoul 06704, Republic of Korea (RoK)

Phone: +82 70 4047 8514
E-Mail: overseas@intellivix.com
Website: intellivix.com

Company profile notice

This IntelliVIX profile provides an overview of IntelliVIX Co., Ltd. and her product coverage with Surveillance Software. It doesn't include any other company introduction, other company's software, solutions, and service. IntelliVIX may update the content of the guide from time to time. The new version of this guide and policy will automatically apply once partners renew their technical support, etc.

Modifications to this guide and policy

IntelliVIX reserves the legal right to interpret every material made by IntelliVIX for IntelliVIX 's own profit and modify this guide and policy by posting a revised policy on and/or through the services and providing notice to you. This guide and policy have changed, generally via email where practicable. and otherwise through the services. Modifications will not apply retroactively. Partners are responsible for reviewing and becoming familiar with any modifications to this policy.